

Pitts Model 12 Fuselage Powdercoat Instructions

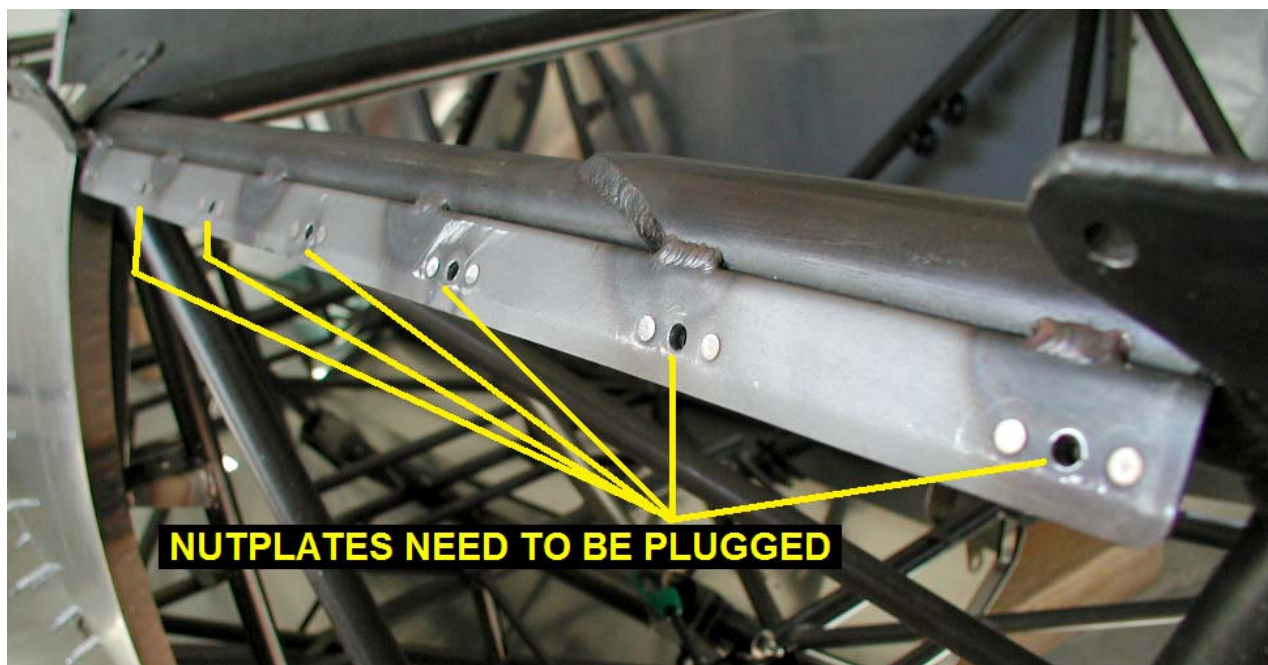
- Please use my box of White TCI powder that you are storing there at your shop for me. For reference it is TCI products 8910-91065 Continental White Urethane Powder

FUSELAGE FRAME:

- Please mask off the two bearing cages so no paint gets on the inside.

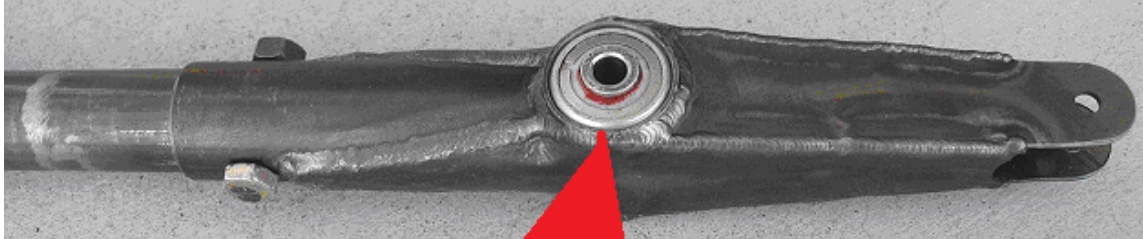


- There are MANY nutplates that need to be plugged. They are on the sides and bottom, sometimes facing forward, but usually facing out. There are a total of _____ that need to be plugged.



CONTROL STICKS:

Front Stick - Please keep powder from getting inside the bearing cage hole



NO PAINT INSIDE WHERE BEARING GOES

Rear Stick - Please keep paint from getting inside the bearing cage hole.



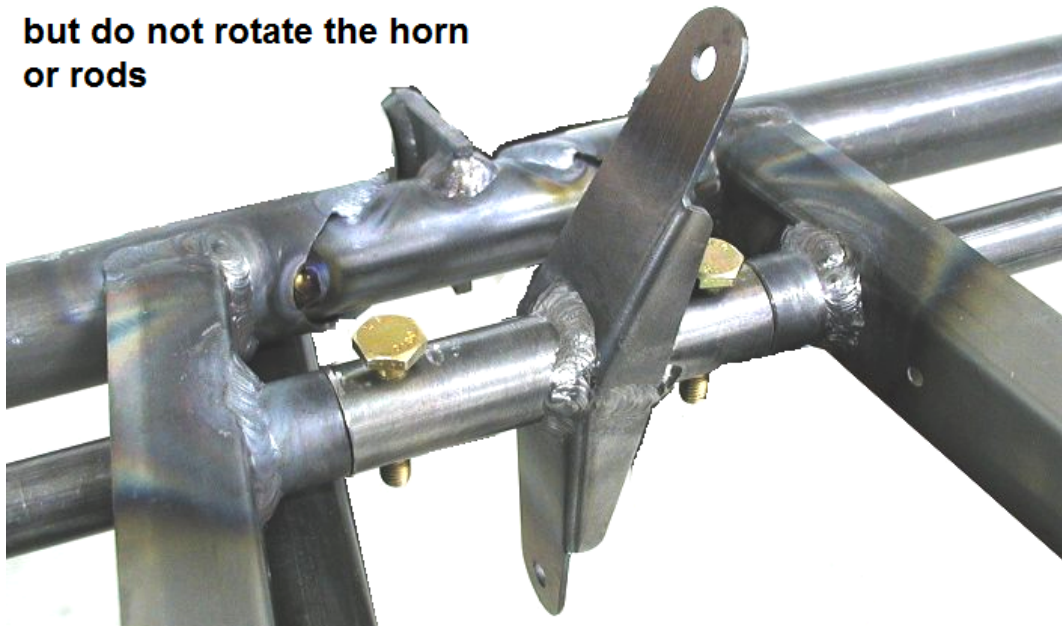
STABILIZER:

The stabilizer looks like this:



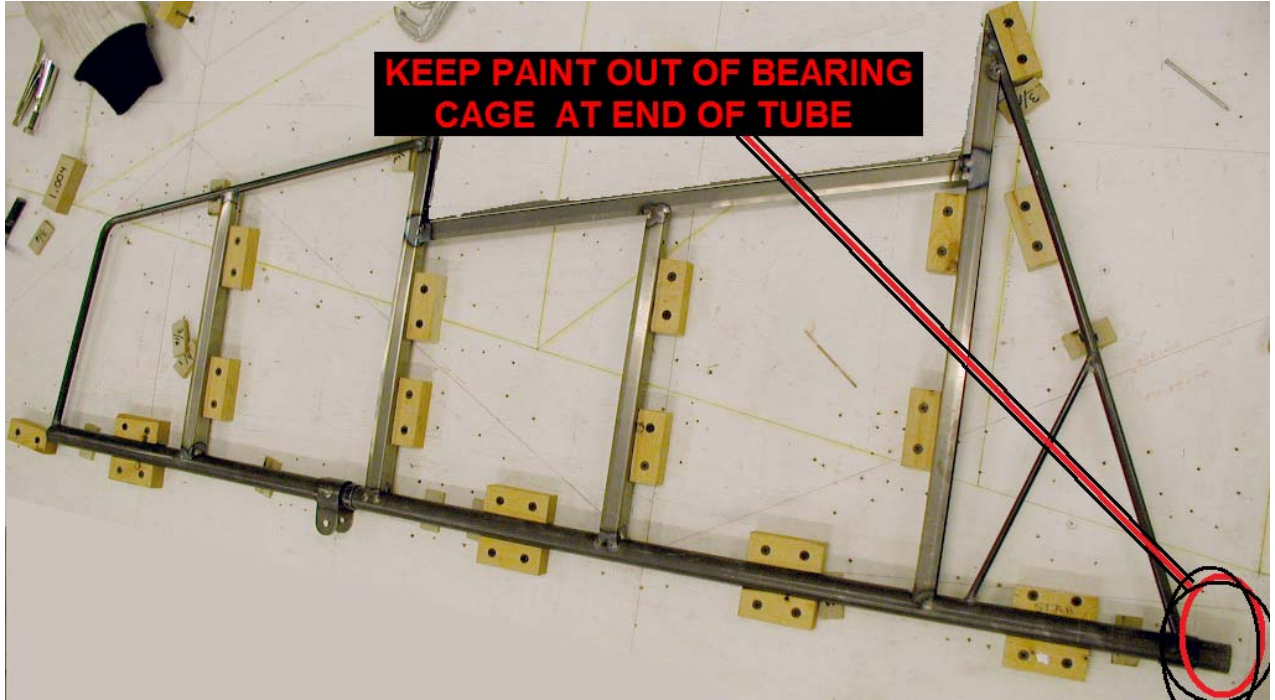
Please take out the TWO bolts shown in the next picture, but keep the holes in alignment - do not rotate the horn or tubes.

**Please remove these two bolts -
but do not rotate the horn
or rods**



ELEVATORS:

Please keep powder from getting inside the bearing cage holes at each end of the big tube.



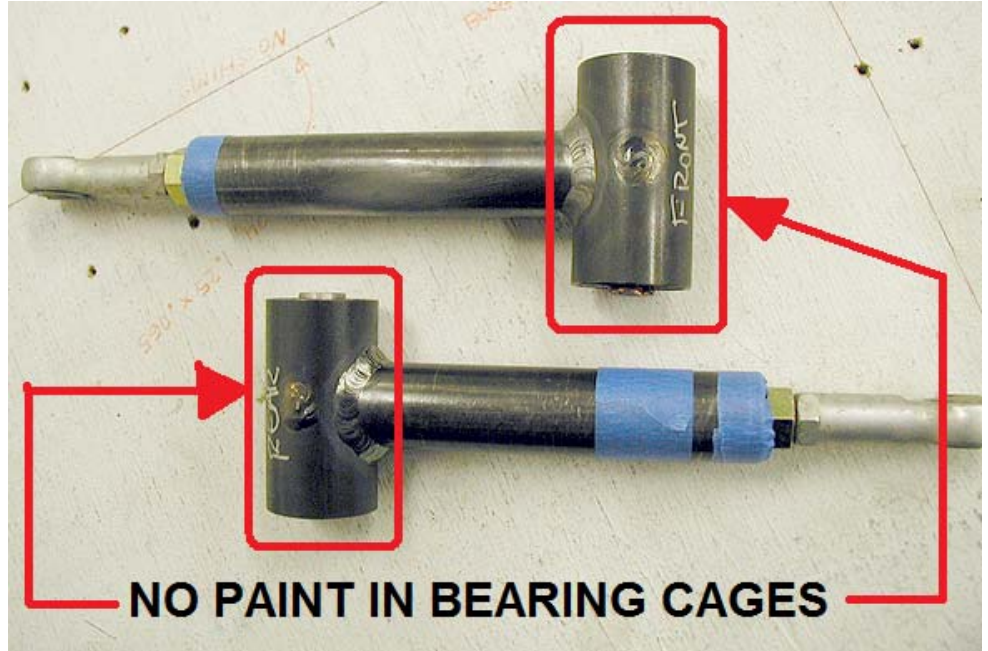
VERTICAL FIN:

There are rows of nutplates on both sides that must be plugged.



IDLER ARMS:

Please keep paint from getting inside the two bearing cage holes.



ALL THREADS:

Please mask off all threaded sections of pushrod ends, throttle / prop levers.

